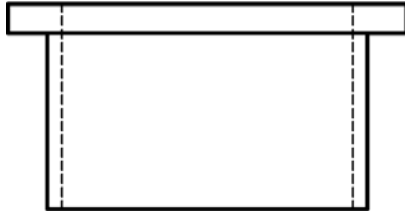


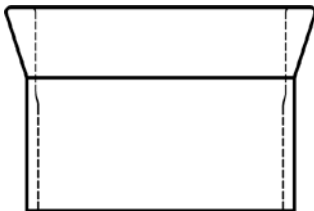
Guide to Flange Styles
Flat Flange

(with or without O-Ring groove)



I.D.	O.D.	Thickness
100 mm (4-inch)	138 mm (5.4-inch)	10 mm (0.4-inch)
130 mm (5.1-inch)	168 mm (6.6-inch)	10 mm (0.4-inch)

Uses Clamp: 6508, 6509, 6510 Flat clamp

Conical Flange


I.D.	O.D.	Thickness
102mm (4-inch)	135mm (5.3-inch)	30mm (1.2-inch)

Uses Clamp: 6496 Standard clamp

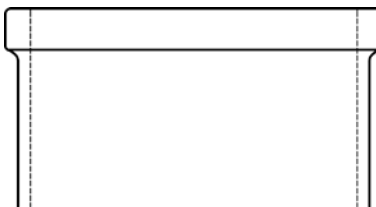
Schott-Duran Flange

(with or without O-Ring groove)



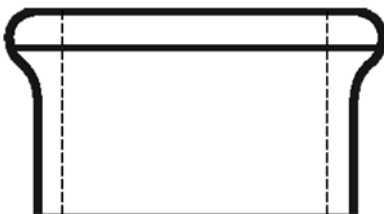
I.D.	O.D.	Thickness
60mm (2.4-inch)	100mm (4-inch)	20mm (0.8-inch)
100mm (4-inch)	138mm (5.4-inch)	20mm (0.8-inch)
150mm (6-inch)	184mm (7.2-inch)	20mm (0.8-inch)
200mm (8-inch)	242mm (9.5-inch)	20mm (0.8-inch)

Uses Clamp: 6517 Quick release clamp

KF Plane Flange


I.D.	O.D.	Thickness
200mm (8-Inch)	230mm (9-Inch)	24mm (0.95-Inch)
300mm (12-Inch)	338mm (13.3-inch)	24mm (0.95-inch)

Uses Clamp: 6525 Coupling

Beaded Process Pipe Flange


Beaded Process Pipe flanges range 1/2-inch thru 6-inch I.D.

Example: 2-inch pipe = 2-inch I.D.
 2-9/16 inch bead O.D.
 Tube O.D. = 2-5/16-inch

See page 244 for dimensions for all sizes of beaded pipe
Uses Clamp: 8856 Coupling