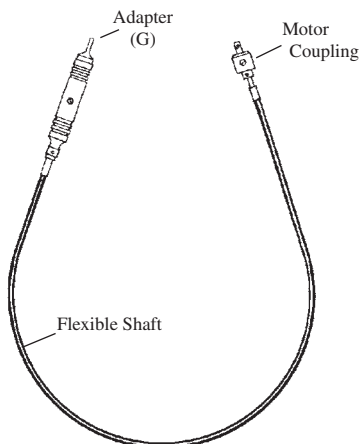


# OPERATION and SERVICE OF 8081 FLEXIBLE SHAFT



## DESCRIPTION

The 8081 Flexible Shaft is suitable for use with any motor, drill press or electric drill that operates from 0 to 14000 RPM. The motor or other power source should always rotate in a counter clockwise direction when looking towards the end of the motor shaft. Flexible Shaft is rated for 30 Ft-Lbs Torque and not recommended for use with motors larger than 1/10 HP.

The sheath is flexible, tough neoprene covered, impervious to oil or grease and is equipped with a ball bearing coupling.

## INSTALLATION

When used with a motor or any other rotating shaft, simply attach the motor coupling directly to the motor shaft. Be sure to tighten the set screw firmly. Check rotation, your Flexible Shaft should run counter clockwise. (Note: with stirring motors that operate to a maximum of 500 RPM, the shaft rotation direction is not that important)

To install in a drill press or electric drill, you will need a short piece of round steel to connect the shaft coupling to the drill chuck. The 8081-24 Handpiece Adapter G, normally used to connect the handpiece to the ACE 8124 Chuck, can be used for this. Insert the exposed end of the round steel into drill chuck and close chuck. Check to be sure it rotates counter clockwise.

If not already assembled, attach the handpiece by pushing it on the grooved QD fitting on sheath. BE SURE THAT THE KEYED TIP OF THE FLEXIBLE SHAFT IS PROPERLY LINED UP WITH THE SLOT IN THE HANDPIECE SHAFT CONNECTOR BY LOOKING INTO REAR OF THE HANDPIECE. If it is not in line, turn shaft or handpiece to correct position.

## LUBRICATION

The Flexible Shaft should be lubricated after every 20 hours of operation

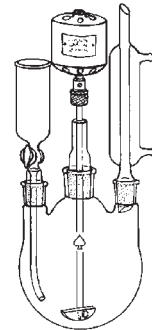
To lubricate, first take off the handpiece. This is done by giving the handpiece a sharp pull. The loosen set screw E (see figure 1) and slide the neoprene sheath off shaft. Apply a light film of petroleum vaseline or light bearing grease along entire length of the shaft. Replace sheath, being sure shaft tip projects 3/4" beyond sheath at the handpiece end. When this is correct, tighten set screw E.

Your handpiece is equipped with grease-sealed ball bearings. It does not need to be lubricated.

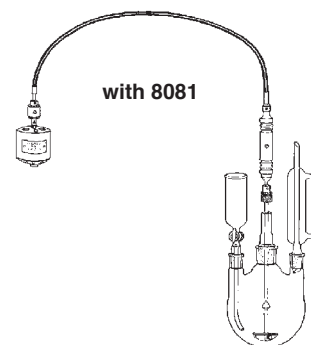
## 8081 FLEXIBLE SHAFT

Used for isolating motor from stirring shaft. Designed at one end with a ball bearing motor coupling for connection to any motor with 8mm (5/16") diameter shaft. Can be connected to drill press or similar power source with a short piece of 8mm diameter round steel adapter (G) for connection to our 8194 chuck or other suitable chuck. The handpiece can be secured with a standard clamp or hand held. These shafts operate up to 14000 RPM. Shafts should run counter clockwise. With motor coupling and handpiece attached, shafts measure 91.4cm (36") or 152.4cm (60"). Complete item consists of Flexible Shaft (A) or (A-1), Motor Coupling (C), Handpiece (B) with Adapter (G), and Chuck Wrench with key and chain.

**BEFORE:  
A LITTLE CROWDED!**



**with 8081**



(A)	Flexible Shaft only, 91.4cm	
(A-1)	Flexible Shaft only, 152.5cm	
(B)	Handpiece with 8mm Adapter (G) only	
(C)	Motor Coupling for 8mm shaft only	
COMPLETE	(Consists of A,B,C & E)	
COMPLETE	(Consists of A-1, B,C & E)	

### Ordering Code

<b>8081-05</b>
<b>8081-06</b>
<b>8081-08</b>
<b>8081-12</b>
<b>8081-30</b>
<b>8081-32</b>

### Additional Parts:

(E)	Chuck Wrench with key & chain	<b>8081-15</b>
(F)	Shaft Lubrication, 30ml	<b>8081-15</b>
(G)	Adapter, Handpiece	<b>8081-24</b>